

ABOUT US

July 2017



**ORANGA
TAMARIKI**

Ministry for Vulnerable Children

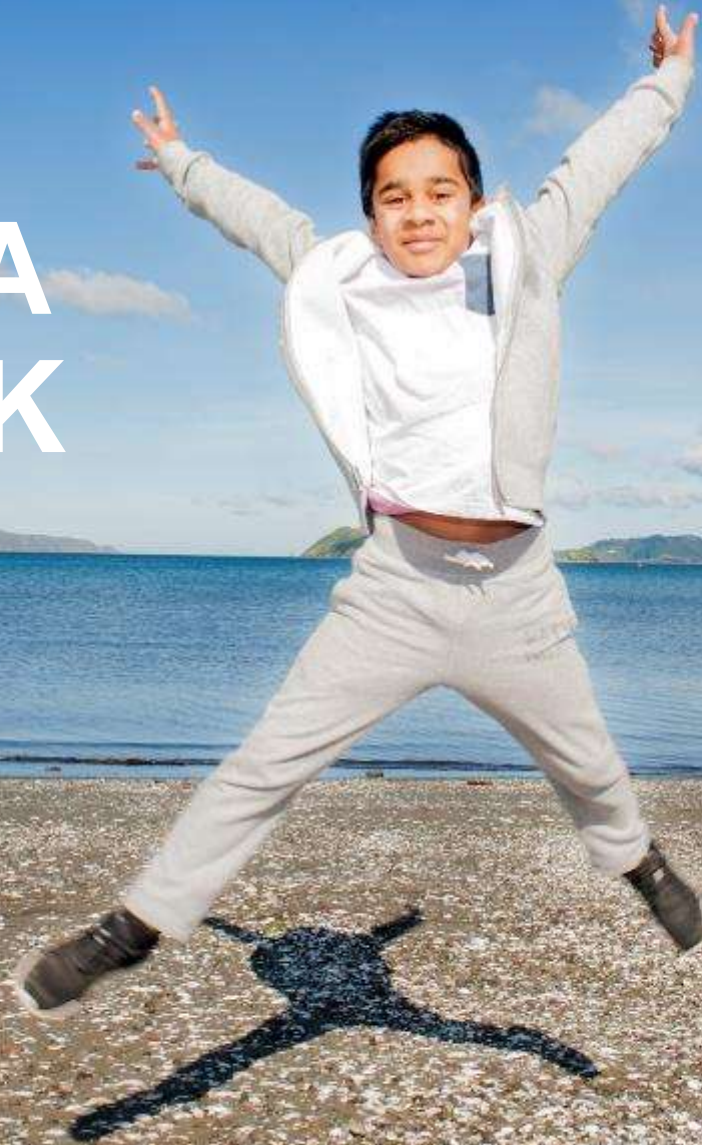
MINISTRY FOR VULNERABLE CHILDREN, ORANGA TAMARIKI



- Launched on 1 April 2017
- Stand alone agency incorporates Child, Youth and Family, parts of Community Investment, and the Children's Action Plan.
- The new ministry:
 - signals a whole of sector approach
 - provides a single point of accountability
 - has a broader remit, including prevention as a core area of focus.



THE ORANGA TAMARIK I WAY





OUR VISION

New Zealand values the wellbeing of tamariki above all else.

OUR PURPOSE

To ensure that all tamariki are in loving whānau and communities where oranga tamariki can be realised.



WE PUT TAMARIKI FIRST

We will challenge when things aren't right for the child.

WE BELIEVE AROHA IS VITAL

It keeps us focused on what is right.

WE RESPECT THE MANA OF PEOPLE

We listen, we don't assume, and we create solutions with others.

WE ARE TIKA AND PONO

We do what we say we'll do.

WE VALUE WHAKAPAPA

Tamariki are part of a whānau and a community.

WE RECOGNISE THAT ORANGA IS A JOURNEY

We understand the long-term impact of our actions today.



OUR FOUNDATIONS

For a new way of working

Engaging all
New Zealanders



An investment approach

A child-centred
system



High aspirations for Māori

Strategic partnering



A trauma-informed
professional practice
framework



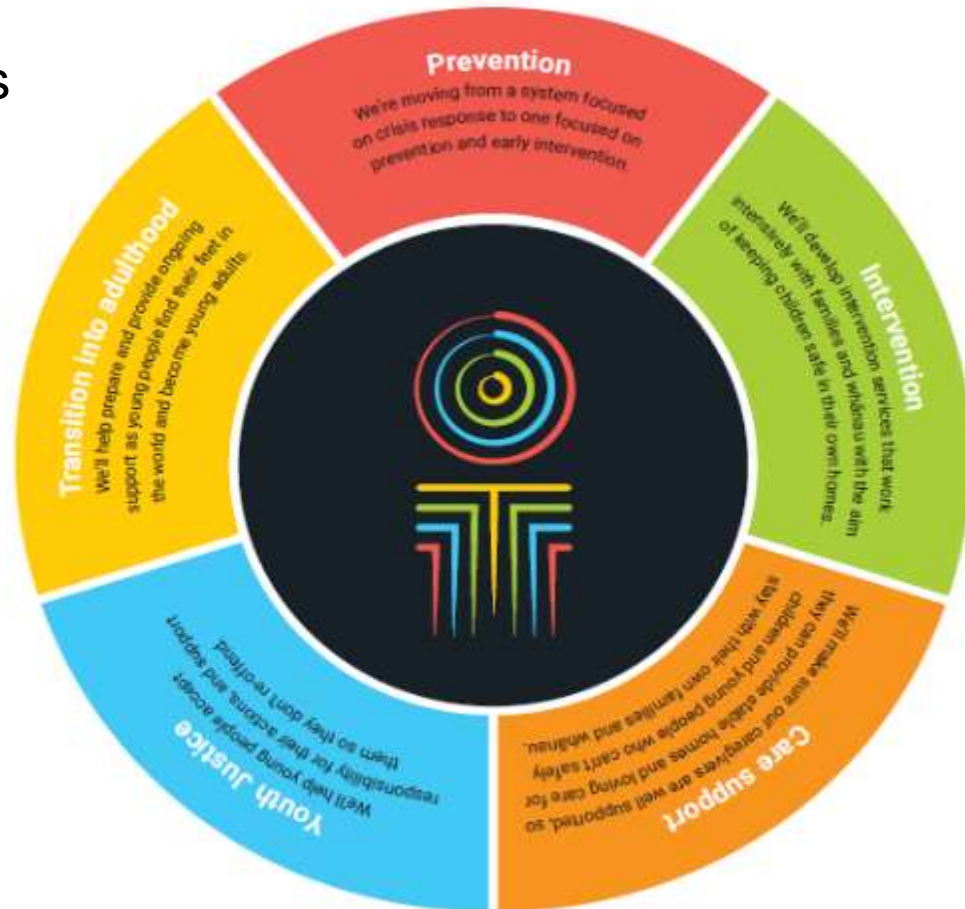


CORE SERVICES

It will take four-five years for all the new services, systems and processes to be in place.

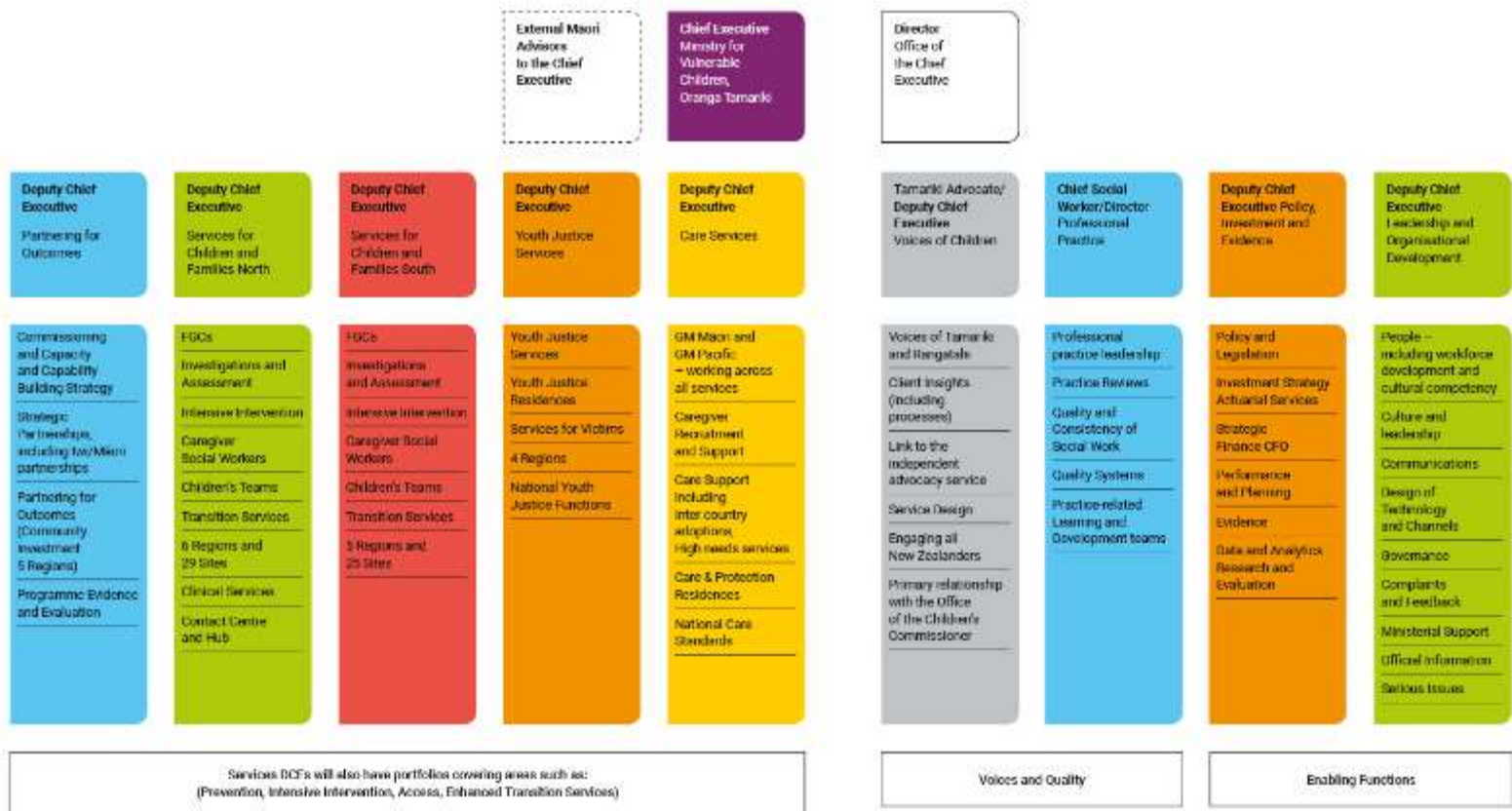
Five key services:

- Care support
- Transition support
- Youth Justice
- Intensive Intervention
- Prevention





OUR STRUCTURE



SERVICES FOR CHILDREN AND FAMILIES REGIONS





KEY ACHIEVEMENTS

- Prioritising the voice of the child:
 - VOYCE Whakarongo Mai
 - new Tamariki Advocate leadership role
 - legislation reform
 - child-centric feedback and complaints mechanism
- Raising the age of care to include 17 year olds
- Increased support for caregivers
- Increasing staff capacity
- Expanding the Family Start programme.



CURRENT SYSTEM

High Proportion
Of the 500 Orders
Flow on to Corrections

Of the 500 Orders,
100 will get a custodial sentence

2,000 Yp in
Youth Court
500 Get Court
Orders

6,000
YJ FGCs
(2500 Yp)

20,000
Youth Apprehensions
(8300 Yp)

363,000 10-17
in population

High-end
Youth
Justice
Interventions
(NGO
provided)

Youth Court

ITC and
Court-
ordered FGC
plans
(Oranga
Tamariki
resources)

FGC

TARGET
GROUP?

Police
intervention
programmes
E.g. AA,
Youth
Development

Diversion

Prevention

10% Life-course p

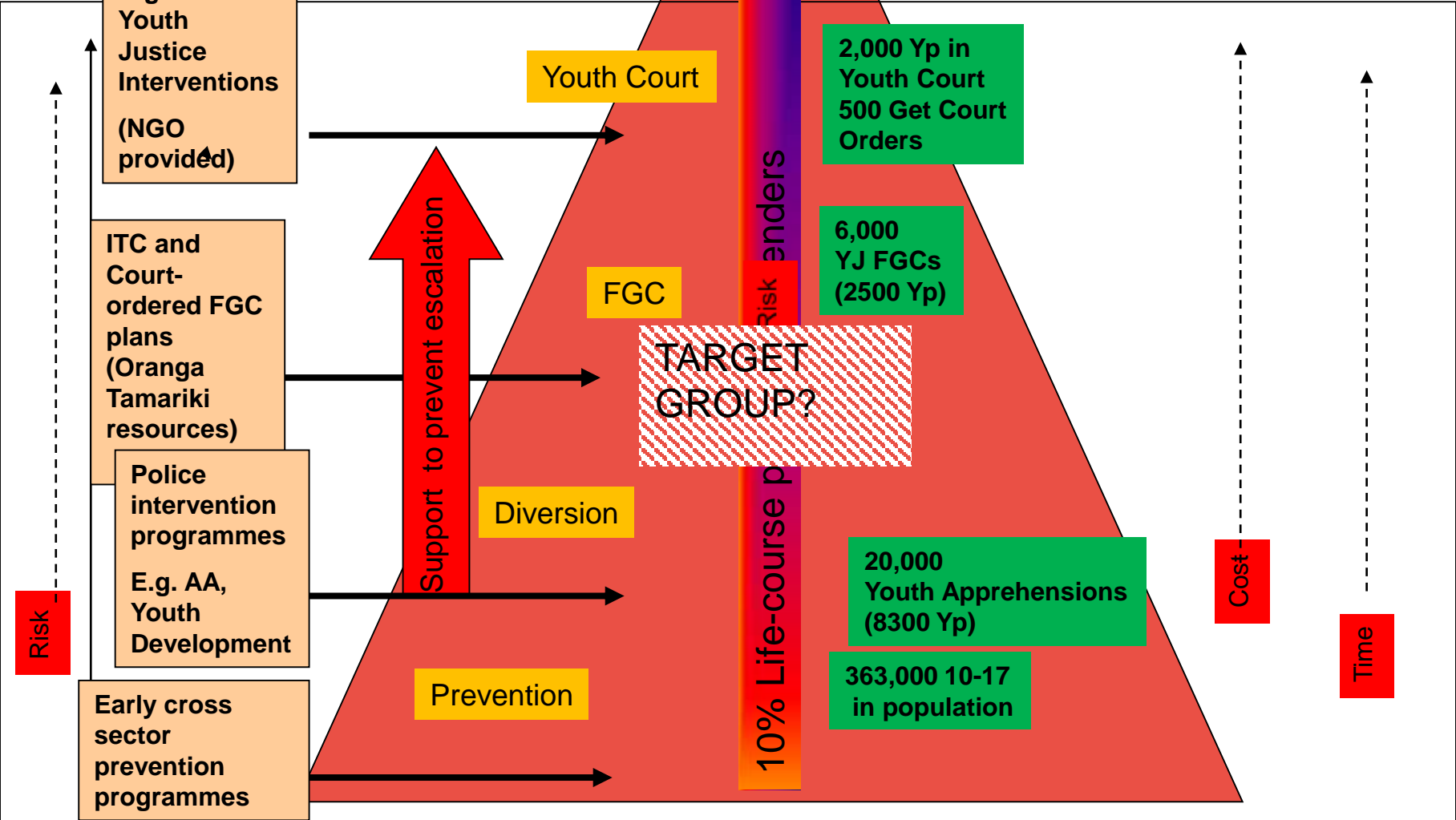
Support to prevent escalation

Risk enders

Risk

Cost

Time



Child view of the new system

My voice and views matter, and there are people looking out for me

My whānau are able to easily access the right support for our needs, as early as possible

When concerns escalate, my whānau gets help so I can stay at home

I have a strong sense of identity and connection with my whakapapa and culture



There's a choice of safe, stable and loving carers in my community if I am not able to stay at home

As I become independent, I know I've got a home to go to and support if things get difficult

I am helped to take responsibility and avoid re-offending through support that meets my needs